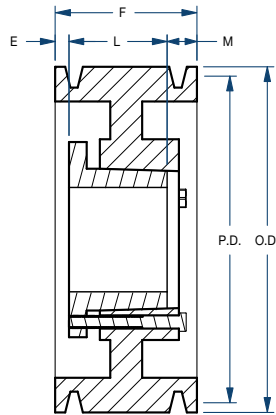


Sheaves

8C/QD STYLE



BLACKSTAR®



Type A

Part No.	Bushing	Bore Range (in)	Type	Diameter (in)		Dimensions (in)				Weight less Bushing (lbs)
				Pitch	Outside	E	F	L	M	
8C80E	E	7/8 – 3-1/2	A	8.0	8.40	2-1/32	8-1/4	2-3/4	3-15/32	43.0
8C85E	E	7/8 – 3-1/2	A	8.5	8.90	2-1/32	8-1/4	2-3/4	3-15/32	48.0
8C90F	F	1 – 4	A	9.0	9.40	1-29/32	8-1/4	3-3/4	2-19/32	60.0
8C95F	F	1 – 4	A	9.5	9.90	1-29/32	8-1/4	3-3/4	2-19/32	65.0
8C100F	F	1 – 4	A	10.0	10.40	1-29/32	8-1/4	3-3/4	2-19/32	69.0
8C105F	F	1 – 4	A	10.5	10.90	1-29/32	8-1/4	3-3/4	2-19/32	73.0
8C110F	F	1 – 4	A	11.0	11.40	1-29/32	8-1/4	3-3/4	2-19/32	78.0
8C120F	F	1 – 4	A	12.0	12.40	1-29/32	8-1/4	3-3/4	2-19/32	83.0
8C130F	F	1 – 4	A	13.0	13.40	1-29/32	8-1/4	3-3/4	2-19/32	89.0
8C140F	F	1 – 4	A	14.0	14.40	1-29/32	8-1/4	3-3/4	2-19/32	97.0
8C160F	F	1 – 4	A	16.0	16.40	1-29/32	8-1/4	3-3/4	2-19/32	113.0
8C180F	F	1 – 4	A	18.0	18.40	1-29/32	8-1/4	3-3/4	2-19/32	131.0
8C200J	J	1-1/2 – 4-1/2	A	20.0	20.40	1/16	8-1/4	4-5/8	3-9/16	152.0
8C240J	J	1-1/2 – 4-1/2	A	24.0	24.40	1/16	8-1/4	4-5/8	3-9/16	185.0
8C270J	J	1-1/2 – 4-1/2	A	27.0	27.40	1/16	8-1/4	4-5/8	3-9/16	208.0
8C300J	J	1-1/2 – 4-1/2	A	30.0	30.40	1/16	8-1/4	4-5/8	3-9/16	230.0
8C360M	M	2 – 5-1/2	A	36.0	36.40	9/32	8-1/4	6-3/4	1-7/32	306.0
8C440M	M	2 – 5-1/2	A	44.0	44.40	9/32	8-1/4	6-3/4	1-7/32	400.0
8C500M	M	2 – 5-1/2	A	50.0	50.40	9/32	8-1/4	6-3/4	1-7/32	475.0